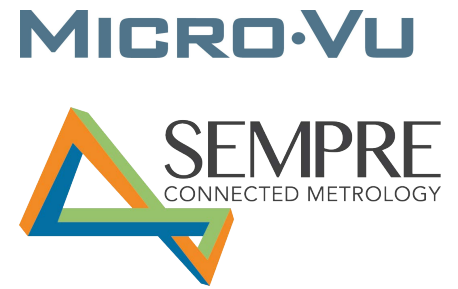


# VERTEX

## 261, 341, 342



- Equipped with a high-resolution camera-based system to get fast, accurate measurements on a variety of parts.
- Provides vivid pictures through a programmable optical and digital zoom.
- Supports sensitive touch probes systems.
- Integrates high speed vertical distance measurement sensors for scanning capability.
- Includes InSpec Metrology Software®.
- Uses proprietary edge detection to capture data.
- Offers advanced programmable lighting control.
- Includes automated calibration procedures.



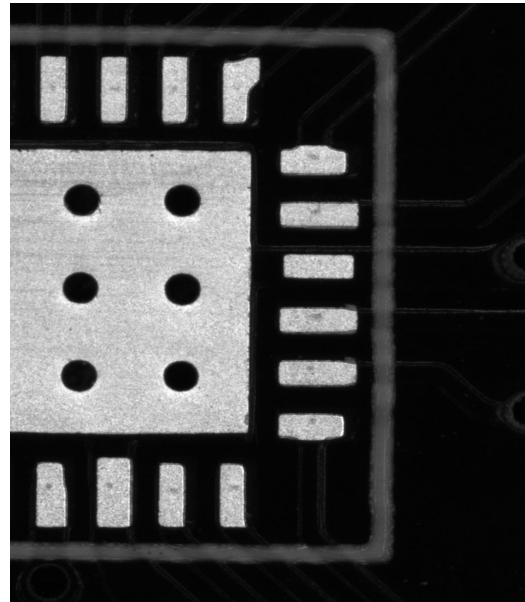
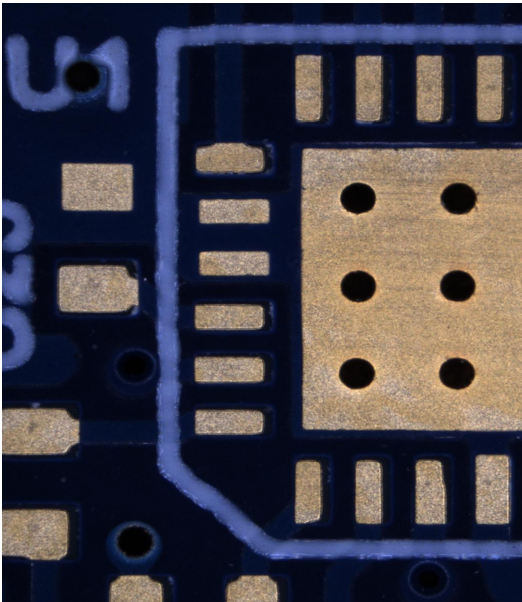
## Technical Specifications

	Vertex 261	Vertex 341	Vertex 342
<b>Physical</b>			
Measurement Volume [mm]	250 x 160 x 160	315 x 315 x 160	315 x 315 x 250
Stage Capacity [kg]	10	20	20
Exterior Dimensions [mm]	755 x 1130 x 1075	900 x 1410 x 1065	900 x 1410 x 1245
Machine Weight [kg]	100	150	160
XY Max Speed [mm/s]	250		
Z Max Speed [mm/s]	100		
Linear Resolution [µm]	0.1		
<b>Electrical</b>			
Input Voltage [VAC]	100-240		
Power Consumption (Max) [W]	120		
Power Consumption (Idle) [W]	45		
Power Consumption (Sleep) [W]	35		
<b>Environmental</b>			
Operating Temperature [°C]	18 - 27; <1 change per hour, <2 change per day		
Storage Temperature [°C]	0 - 50		
Relative Humidity	30% - 80% (Non-Condensing)		
Sound Level [dB(A)]	< 70		
Max Altitude [m]	4000		

Stage capacity is based on an evenly distributed load.

## Configuration Options

### Camera Options:



#### A. Color Camera:

- Utilizes white illumination system.
- Offers vivid chromatic information increasing the contrast of color parts.

#### B. Monochrome Camera:

- Utilizes red illumination system.
- Offers higher optical resolution compared to a color system.

### Optical Sensor Configuration Options:

#### A. Standard Zoom Range Lens or 6x Lens:

- Has an optical and digital hybrid zoom range of 19.5:1.
- Achieves an optical configuration and magnification of  $\approx 20x - 390x^*$ .
- Its simplicity and compactness usually allows for higher accuracy measurements and a longer life span.

#### B. Extended Zoom Range Lens or 12x Lens:

- Has an optical and digital hybrid zoom range of 36:1.
- Achieves an optical configuration and magnification of  $\approx 15x - 540x^*$ .
- Offers a larger field of view in low magnification and higher resolution in high magnification.

\*Monitor size and resolution affect on screen magnification.

## Optical Multiplier Options:

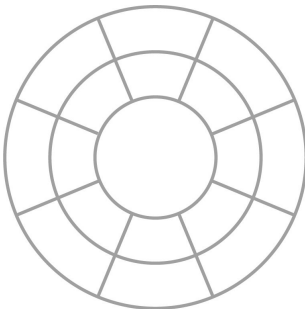
### A. No Multiplier or Long Working Distance:

- The optical magnification is maintained for both lens options.
- The working distance is  $\approx 66$  mm.

### B. 2x Optical Multiplier or Short Working Distance:

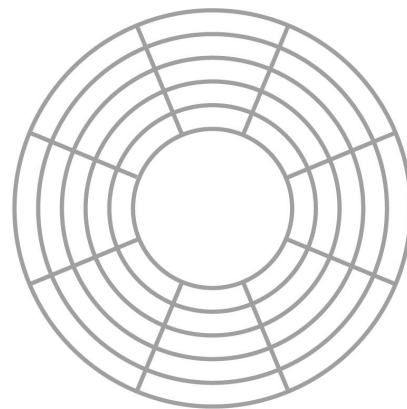
- Doubles the optical magnification of both lens options and simultaneously shrinks the field of view by half.
- Significantly shrinks the working distance to  $\approx 25$  mm.

## Ringlight Options:



### A. Standard Ringlight:

- Offers 2 rings, 8 sections, and 16 segments of programmable lighting options.
- Suffice the basic needs of programmable surface lighting.



### B. Macro Ringlight:

- Offers 5 rings, 8 sections, and 40 segments of programmable lighting options.
- Improved image contrast for parts with complex surface geometry.

*Product information is subject to change without prior notice as a result of ongoing technical development.*

