

# VF1

## Field of View Measuring System

**MICRO·VU**

 compatible  
 with:

**InSpec**

- VF1 is well suited for quick and precise measurements.
- Compact and lightweight desktop machine.
- No need for focus adjustments.
- Offers a large depth of focus with 30 mm.
- Incorporates a touch panel that allows for automatic measurement programs search, execution and measurement results display.
- Includes the next generation InSpec Metrology Software .
- Features a compact profile light design.



### Technical Specifications

Measurement Capacity	XY Accuracy		Measurement Range
69.3 x 49.6 mm	At Calibration Plane	5.0 $\mu\text{m}$ <sup>1,2,3,4</sup>	30 mm
	Within $\pm 10$ mm of Calibration Plane	(5.9 + L/60) $\mu\text{m}$ <sup>1,2,3,4</sup>	

Machine Dimensions	Machine Weight
187 x 394 x 464 mm	20 kg

1. Within operating temperature of 20.0°C  $\pm$  1°C.
2. L is in mm.
3. Up to lengths of 75 mm.
4. Using Micro-Vu Calibration Artifact.

Provided and supported by

## Key Features

- Large Measurement Range
  - Minimizes Measurement Error
  - No Focus Adjustments needed
- Single Snapshot Measurement
- Scratch Resistant Stage Glass
- Automatic Part Identification
  - Adjusts to Part's Orientation
  - Minimal Part Fixturing Required
- Compact Profile Light Design
- Programmable Light Settings

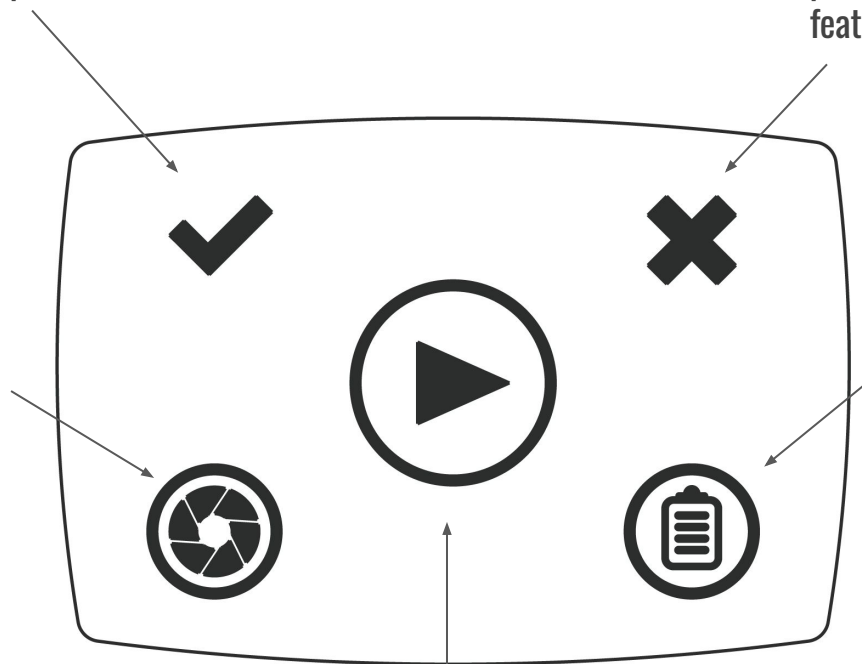
## Touch Panel

**Pass Indicator:**  
Illuminates green indicating the part passed inspection.

**Fail Indicator:**  
Illuminates red when the part fails inspection or a feature fails to measure.

**Live Image:**  
Press to display a live video image.

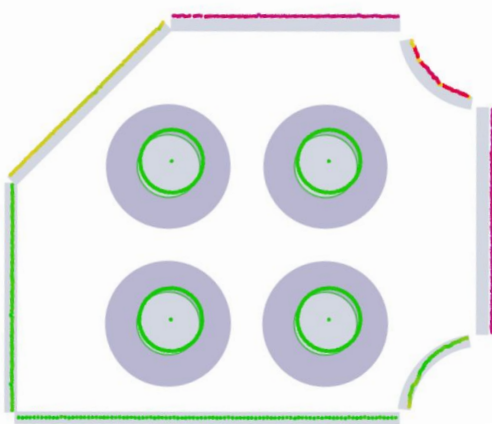
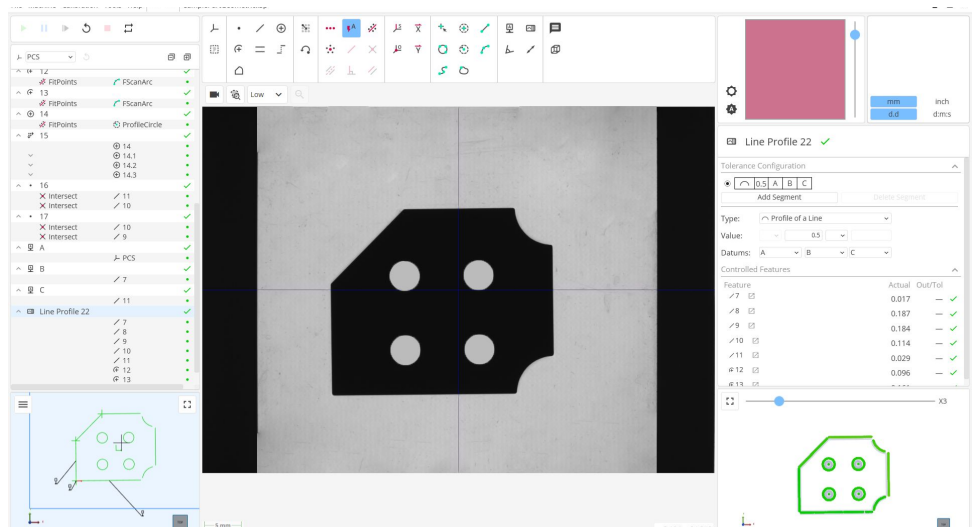
**Report:**  
Opens and closes the Reporting page. Prints the report.



**Play:**  
Runs programs. Searches pattern library and runs program. Displays the machine's state.

## InSpec Software

- Concise screen layout.
- Advanced edge detection algorithms.
- Sub-pixel accuracy and repeatability.
- Included vision and light calibration routines.



- Import nominal values from 3D CAD models or based on reference part measurements.
- Profile tolerances support complex datum reference frames.
- Color-based Points View visualizes geometric tolerance results.

- Automatically record data and print an inspection report.
- Export measurement results and data automatically after completing measurements.
- Advanced geometric dimensioning and tolerancing capability.

Reporting

Filter Properties: None  Include Schematic

Date: 2023/02/23 04:30:49 PM

Feature	Actual	Nominal	Dev/Nom	Out/Tol
14.2				
Diameter	3.9787	4.000 ± 0.500	-0.0213	✓
Position X	10.0197	10.000 ± —	—	✓
Position Y	16.0437	16.000 ± —	—	✓
Position Z	0.0000	0.000 ± —	—	✓
Position 23	-0.3693			✓
	-0.4618			✓
14.3				
Diameter	3.9712	4.000 ± 0.500	-0.0288	✓
Position X	20.0300	20.000 ± —	—	✓
Position Y	16.0445	16.000 ± —	—	✓
Position Z	0.0000	0.000 ± —	—	✓
Position 23	-0.3496			✓
	-0.4550			✓
16				
Position X	-0.0082	0.000 ± —	—	✓
Position Y	15.0674	15.000 ± —	—	✓
Position Z	0.0000	0.000 ± —	—	✓
17				
Position X	9.9966	10.000 ± —	—	✓
Position Y	25.0811	25.000 ± —	—	✓