

# DataLyzer<sup>®</sup> COA

Software for Certificate of Analysis and FAIR



## DataLyzer® International

DataLyzer® International provides its customers with advice, tools and support to promote manufacturing excellence through continuous improvement.

DataLyzer® is the only supplier globally offering an integrated FMEA, MSA, SPC, OEE and CAPA solution.

## DataLyzer® COA and DataLyzer® Spectrum

More and more companies are implementing tools to control and continuously improve their processes. Customers are requiring controlled processes and prove of continuous improvement. To achieve controlled processes companies have implemented DataLyzer SPC software.

While companies are requesting prove of continuous improvement at the same time they are requesting to include Certificate of Analyses reports with each shipment proving their compliance to customer requirements.

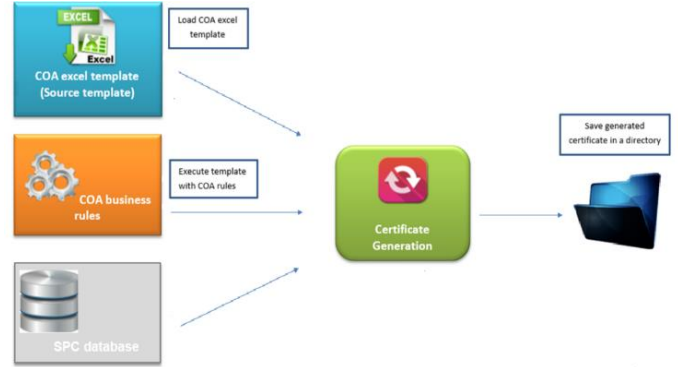
Examples of these requirements are the First Article Inspection Reports (FAIR) in the Medical Devices and Aerospace Industry, the Initial Sample Report in PPAP and the Initial Sample Inspection Report (ISIR) in the Military Industry.

AS9102 First Article Inspection													PAGE	OF
FORM 3: CHARACTERISTIC ACCOUNTABILITY, VERIFICATION AND COMPATIBILITY EVALUATION														
1.	Part Number		2. Part Name		3. Serial Number (see note below)		4. FAI Report							
4.	PN 9876	Example part title		1234										
Characteristic Accountability				Inspection / Test Results				None. If part is not serialized for date code or lot number, see note 14.						
5. Char Num	6. Ref Location (see note below)	7. Characteristic Designator	8. Requirement	9. Results	10. Designed Tooling/Gauging used to accept product	14.1. Measuring Equipment utilized for FAI	14.2. Acceptance Plan	14.3. Justification for <100% Evaluation						
8.	CN1	Loc1	CharDes1	Req1	1.23									
9.	CN2	Loc2	CharDes2	Req2	12.72									
10.	CN3	Loc3	CharDes3	Req3	-0.048									
11.	CN4	Loc4	CharDes4	Req4	-0.002									
12.	CN5	Loc5	CharDes5	Req5	0.005									
13.	CN6	Loc6	CharDes6	Req6	0.004									
14.	CN7	Loc7	CharDes7	Req7	0.0001263									
15.	CN8	Loc8	CharDes8	Req8	34.3									
16.	CN9	Loc9	CharDes9	Req9	36.2									
17.	CN10	Loc10	CharDes10	Req10	77.089									
18.	CN1	Loc11	CharDes11	Req11	0.002									
19.	CN1	Loc12	CharDes12	Req12	0.005									
20.	CN1	Loc13	CharDes13	Req13	-0.048									
21.	CN1	Loc14	CharDes14	Req14	-0.922									
22.	CN1	Loc15	CharDes15	Req15	7.72									
23.	CN1	Loc16	CharDes16	Req16	18.93									
24.	CN1	Loc17	CharDes17	Req17										
25.	CN1	Loc18	CharDes18	Req18	0.4									
26.	CN19	Loc19	CharDes19	Req19	0.55									
27.	CN20	Loc20	CharDes20	Req20	6.23									
28.	CN21	Loc21	CharDes21	Req21	0.33									
29.	CN22	Loc22	CharDes22	Req22	1.11									
30.	Reference location shall include drawing zone, sheet number or section number as applicable													
31.	Signature indicates that all characteristics are accounted for, meet drawing requirements or are properly documented for disposition.													
32.	14. Prepared By: _____ 15. Date: _____													
33.	CL67-710-3 June 2008													

Our Certificate of Analysis software can be used as an add-on to our SPC software and automatically exports the measurement results in a COA or FAI reports.

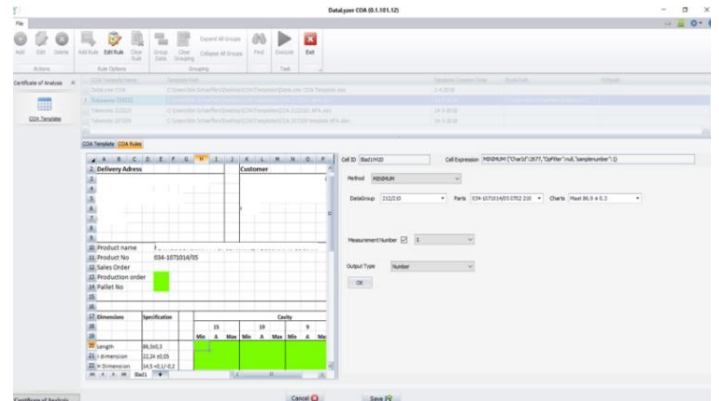
## A Flexible Solution

The DataLyzer® COA software is developed to design COA certificates according to the needs of the customer and generate COA and FAI reports based on the set-up of configuration.



A COA Excel template file acts as a source to the DataLyzer® COA software. This file is designed in a format pre-defined by the user. Business rules are applied to specific cells in the template based on user requirements. Multiple template files can be saved in the DataLyzer® COA software.

The COA certificate documents can be generated in either Excel or PDF and contain the results of the business rules as they are applied to the cells in the excel template.



## General features

DataLyzer® COA is an add-on module to the DataLyzer® Spectrum SPC module and database. DataLyzer® COA is available in the English language. Multiple languages will be supported soon.



## Customer Support

Technical support for the DataLyzer® COA system is available by phone, e-mail or by our automated support desk.

USA: Monday through Friday, 8:30 to 5:30 ET

Europe: Monday through Friday, 8:30 to 6:30 GMT -1

Asia: Monday through Friday IST 8:30 to 6:30

Software purchases include no-charge updates for six months. Support agreements are renewable annually for a modest fee. Services include new versions upon request and personal telephone, fax or e-mail support.

Training seminars are available in our offices or on site. Contact your account manager for more information. Custom software modifications can be quoted individually.

## Database Compatibility

DataLyzer® COA and DataLyzer® Spectrum software versions are available for use with Microsoft SQL Server databases.

## Operating System Compatibility

Windows 7® Professional SP1 (32/64 bit) or higher, and Windows 7® Enterprise SP1 (32/64 bit).

## Associated Modules

- DataLyzer® Spectrum
- DataLyzer® Spectrum - Gage Management System
- DataLyzer® SPC Wizard (data analysis and training module)
- DataLyzer® Failure Mode and Effect Analysis

DataLyzer is a registered trademark of DataLyzer International Inc.

Citrix is a trademark of Citrix Systems, Inc. and/or one or more of its subsidiaries, and may be registered in the United States Patent and Trademark Office and in other countries. Novell and NetWare are registered trademarks of Novell, Inc. in the United States and other countries. Oracle is a registered trademark of Oracle Corporation and/ or its affiliates. Microsoft, Excel, SQL Server, Windows NT, Windows, Windows Vista are registered trademarks of Microsoft Corporation in the United States and other countries.

